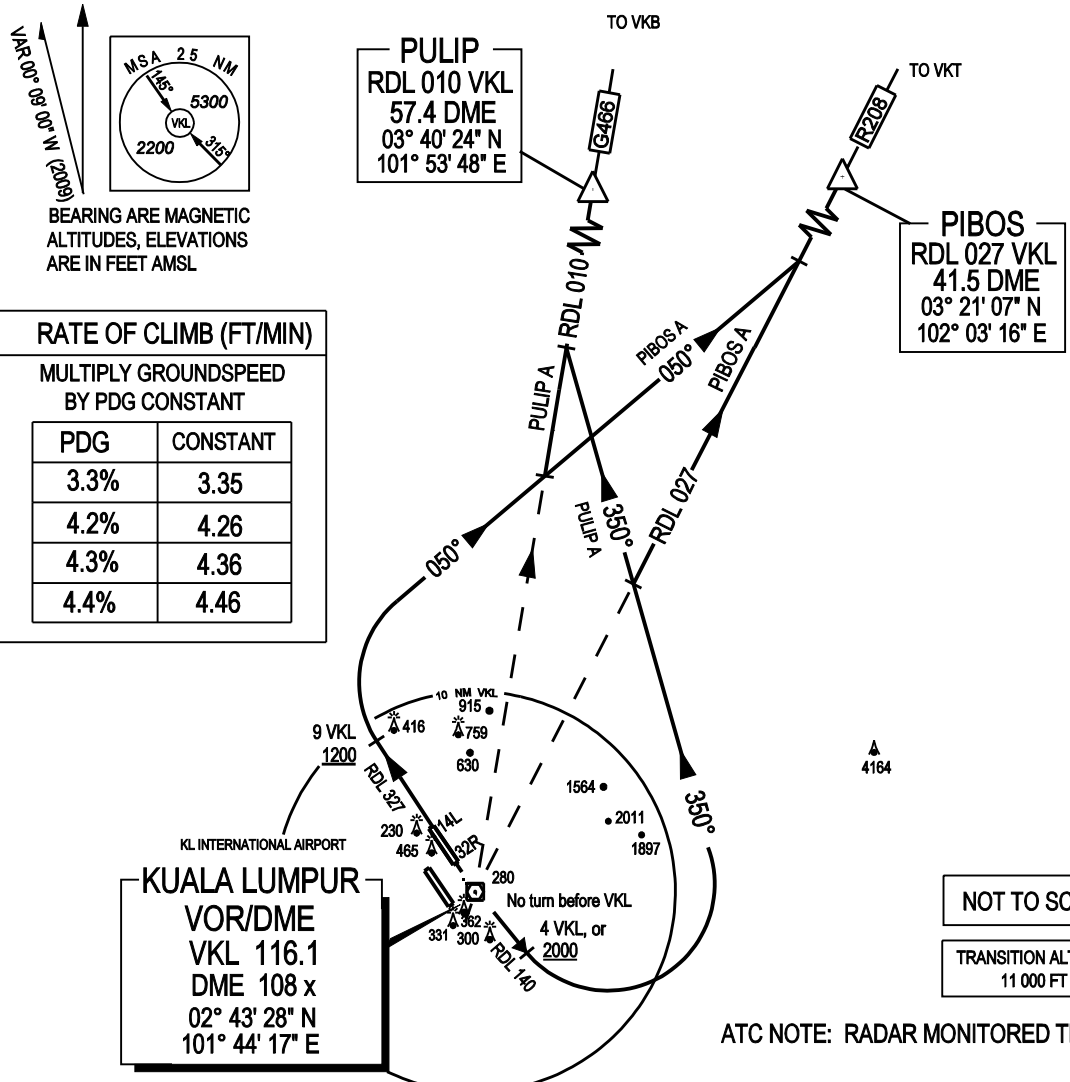


ATIS		126.45	APP N	124.2 MHz	LUMPUR GROUND		SEPANG / KL INTERNATIONAL AIRPORT RWY 14L / 32R DEPARTURES NORTH EAST
14L/32R	TWR	118.8	(SECONDARY)	121.25 MHz	APRONS (MN, MS, ME & MW)	122.15	
	SMC	121.65			APRONS (SE & SS)	122.275	
14R/32L	TWR	118.5	APP S	119.45 MHz	APRONS (SN & SW)	122.85	
	SMC	121.8	(SECONDARY)	125.1 MHz	APRONS (CN,CE,CW)	123.25	
					APRONS (CS)	121.8	



**PULIP ALPHA DEPARTURE**

RWY 14L - CONTACT APP S AFTER AIRBORNE

- PDG: FOR PULIP: 4.4% TO 5400 FT - OBSTACLE/TRAFFIC/CTA
- PDG: FOR PIBOS: 4.4% TO 3900 FT - OBSTACLE/TRAFFIC/CTA
- TRACK 146° TO VKL VOR, THENCE RDL 140 FROM VKL VOR
- AT OR ABOVE 2000 FT OR AT 4 DME VKL, TURN LEFT
- TRACK 350°
- FOR PULIP A  
INTERCEPT RDL 010 OUTBOUND FROM VKL VOR TO PULIP
- FOR PIBOS A  
INTERCEPT RDL 027 OUTBOUND FROM VKL VOR TO PIBOS

**PIBOS ALPHA DEPARTURE**

RWY 32R - CONTACT APP N AFTER AIRBORNE

- PDG: FOR PULIP: 4.2% TO 10300 FT - /TRAFFIC/CTA
- PDG: FOR PIBOS: 4.3% TO 8800 FT - /TRAFFIC/CTA
- TRACK RDL 327 OUTBOUND FROM VKL VOR
- AT 9 DME VKL, NOT BELOW 1200 FT, TURN RIGHT
- TRACK 050°
- FOR PULIP A  
INTERCEPT RDL 010 OUTBOUND FROM VKL VOR TO PULIP
- FOR PIBOS A  
INTERCEPT RDL 027 OUTBOUND FROM VKL VOR TO PIBOS

CAUTION : - CLIMB TO INITIAL ALTITUDE 6000 FT - CONTACT " LUMPUR APPROACH " NOT LATER THAN 2000 FT AFTER AIRBORNE.  
- REPORT : - ASSIGNED SID - ALTITUDE PASSING TO THE NEAREST 100 FT - INITIAL ALTITUDE CLIMBING TO.

**VERTICAL RESTRICTIONS:**  
ADHERE TO VERTICAL RESTRICTIONS eg. 1500 FT = NOT BELOW 1500 FT ON CLIMB UNLESS SPECIFICALLY CANCELLED BY ATC